

# DELTA DASH

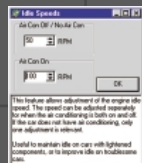
DELTA DASH software is a powerful diagnostic tool capable of reading all ECU parameters, displaying them in graphical form and logging live data for later analysis.



This is the ultimate in tuning aids. It also allows some alterations to ignition timing and idle control. Whether you are a professional tuner or a

home enthusiast, you can now display and capture data of a type you have never dreamed and at a speed you would never have believed.

In addition DELTADASH allows instantaneous ECU resets and can display up to 268 diagnostic trouble codes (varies with model).



With the log files that DELTA DASH generates it ensures that when re-programming and using the DELTA ECU software we can ensure that we tailor the program to your needs.

It also means you can accurately monitor your car for improved performance and reliability. Call us for more information.

**ECUTEK**

DELTA DASH is available for all Subaru models MY99 on wards

**IMPREZA  
LEGACY  
FORESTER  
LIBERTY  
OUTBACK**

For more technical information on EcuTEK products please visit

[www.EcuTEK.com.au](http://www.EcuTEK.com.au)

DELTA ECU & DELTA DASH

Distributed by

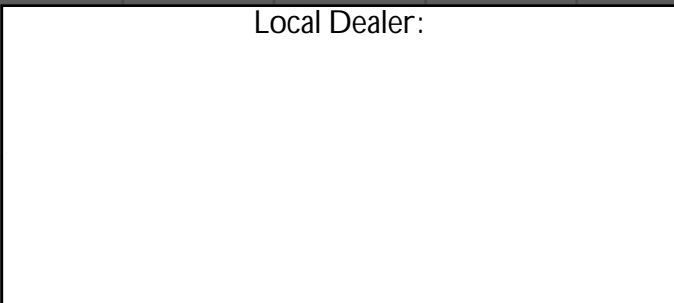


[www.MRTrally.com.au](http://www.MRTrally.com.au)

MRT Performance, 82 Belmore St, Ryde, NSW 2112 (Behind Shop)

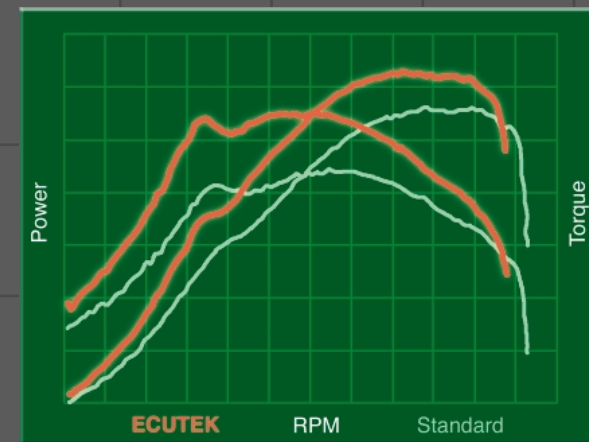
Phone: (02) 9809 2110 Fax: (02) 9809 2286

Local Dealer:



# More Power More Torque

Same Exhaust  
Same Boost  
Same ECU!



with

# ECUTEK

# Tuning & Diagnostic Software

# DELTA ECU

**O**riginal ECU re-programming software, giving the ability to re-map standard cars, without the need to purchase aftermarket ECU hardware.

If you have a modified Subaru and are considering an ECU replacement, are you concerned about losing the standard ECU's useful features, such as connecting to Subaru dealer's diagnostic equipment?

Perhaps you don't want to cut your car's wiring loom or fit 'piggyback' controllers? Or are you concerned about detection of your modifications?

Now MRT Performance offers you the best of both worlds with the revolutionary new ECU<sup>TEK</sup> data software.

With the ECU<sup>TEK</sup>, DELTA ECU system, we simply re-map your original ECU to provide the optimum management of your modified engine.

*Consider these benefits:*

- No alteration to your vehicle's equipment.
- Fully reversible.
- Maintains standard appearance.
- Subaru dealer can still 'interrogate' your car's ECU.
- Retain all the subtleties of the original ECU often lost in aftermarket units.
- Idling and warm up management.
- Suits all Turbo Impreza models, WRX, GT, STi, MY 99 to current (refer to web site).

**ECUTEK**

# ECUTEK

Access to the Subaru ECU for Re-mapping and Data logging is now possible.

ECUTEK offers two software packages.

- Data logging (DELTA DASH) and
- Re-mapping (DELTA ECU).

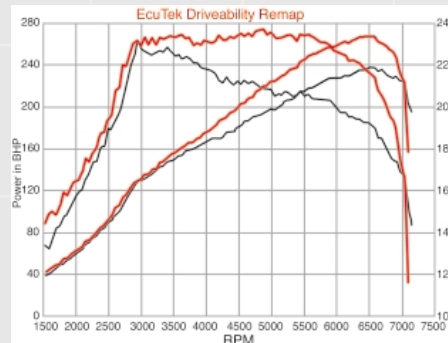
All via the diagnostic data port and no physical access to the ECU is required.

DELTA ECU has three Re-mapping options.

## 1 Driveability Re-map

Popular consensus says that the program (in the AE802/782 standard ECU) produces a less enjoyable driving experience than other ECU versions in the 99/00 Impreza Turbo/WRX/GT. We optimise the maps in this ECU, to significantly improve turbo spool up times, boost control, driveability, and power.

*This remap is suitable for unmodified and mildly modified cars.*

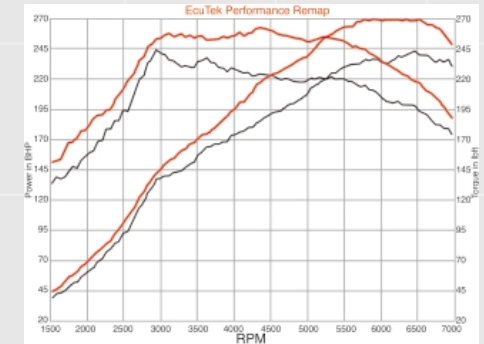


## 2 Performance Re-map

This re-map offers an increase in power and torque over standard.

Boost control has also been altered to cope with other performance modifications, such as exhausts and airfilters. This provides further safeguarding against overboost conditions.

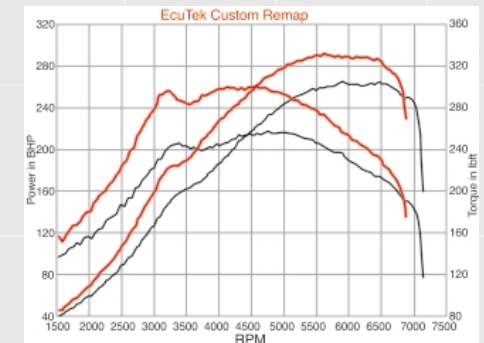
*This remap is suitable for modified cars.*



## 3 Custom Re-map

This re-map offers an 'a la carte' choice of tuning options, tailored to your specific car. Dyno time and access to the car is required for this option. Fuelling, ignition, boost control and rev limiting can all be custom mapped to your requirements.

*This remap is suitable for highly modified cars.*



**ECUTEK**