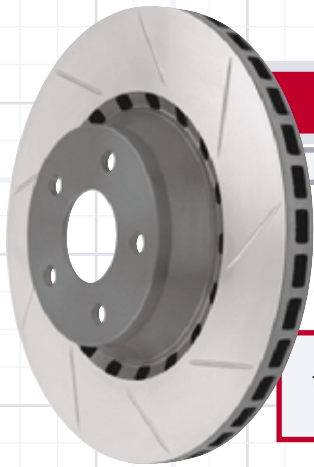


Brake Rotors

www.MRTrally.com

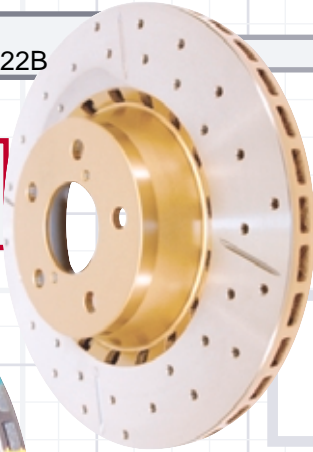
Available for all popular models (Subaru parts shown)



Part No:
MUSBRO22HA-right
MUSBRO22KA-left

Part No:
MUSBRO22B

Rotor
thickness
24mm



DBA 650 series

Slotted

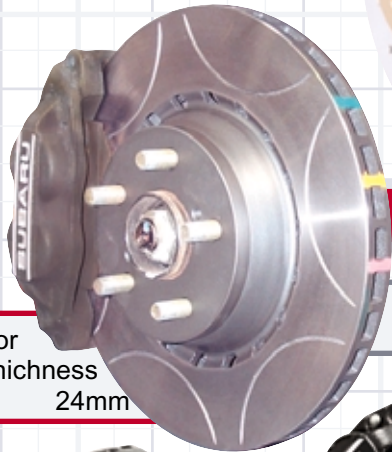
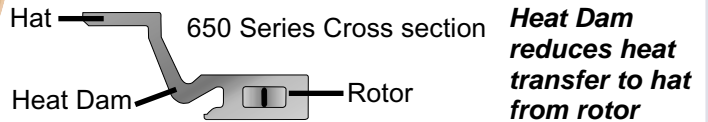
- For extra heavy duty use

Drilled & Slotted

- For heavy duty use

Benefits:

- Increased brake 'bite'
- Up to 20% cooler than standard rotor
- Suitable for street use
- Available for front and rear



Part No:
MUSBRO22W

Rotor
thickness
24mm

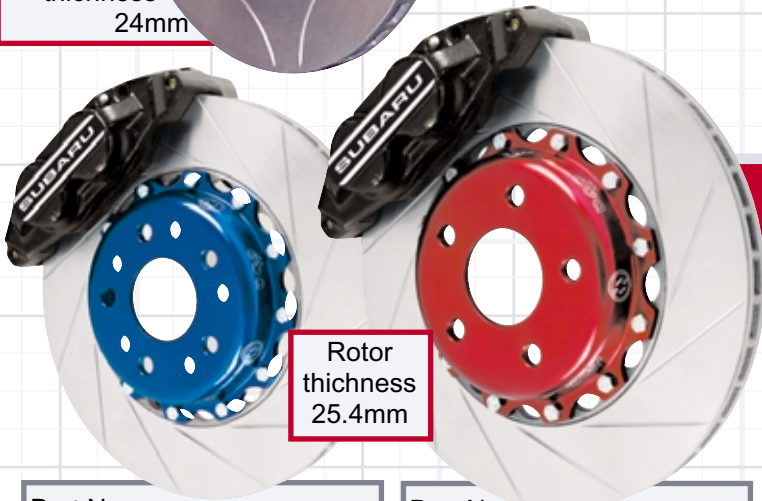
Cool Groove Design

Benefits:

- Motor sport guarantee
- Thermographic temperature monitoring
- Higher spec than slotted only

Features:

- Unique "C" design groove
- Higher grade steel
- For front, 4 pot callipers only



Rotor
thickness
25.4mm

DBA 5000 series

2 piece Alloy Hat/Cast Rotor
As used by MRT on their rally Car

Features:

- Suitable for Track day and High performance use
- Heat treated
- Increased brake 'bite'
- Patented Kangaroo Paw ventilation system
- Hat made from 6061 T6 Aluminium for less thermal distortion
- Thermographic temperature monitoring at 458, 550 & 630°C
- Rotors can be replaced separately (hats are reusable)
- Fits standard Subaru 4 pot callipers (not 2 pot i.e. USA)
- Available with Left and Right hand slot design
- Available in red or blue
- For front only

Part No:
MUSBRO22YBSR-blue/right
MUSBRO22YBSL-blue/left

Part No:
MUSBRO22YRSR-red/right
MUSBRO22YRSL-red/left

Cross section of unique Kangaroo Paw ventilation design used in DBA 5000 & 650 series rotors



For full list of Rotors and part numbers please refer to web site

Related

Performance Page

- Brake bracket • Brakes

Phone: +61(0)2 9809 2110 Fax: Fax: +61(0)2 9809 2286

Email: info@MRTrally.com.au

MRT Performance, 82 Belmore St, Ryde, NSW, Australia 2112

Specifications and dimensions subject to change without notice

we rally,
you win

MRT Performance