

Windows Software for the SerialLink

(Replaces Telix)

WAR software

FILE OPTIONS

- OPEN DATA FILE
- OPEN MAP FILE
- CAPTURE FILE SETTINGS
- SAVE CURRENT MAPS TO A FILE
- DOWNLOAD DATA FROM DATATRAP

MAP OPTIONS

- ▶ GET MAP FROM LINK COMPUTER
- VIEW/EDIT CURRENT MAPS

PLAYBACK OPTIONS

- PLAYBACK DATA FILE AS A PLOT
- PLAYBACK DATA FILE ON GAUGES
- VIEW DATA FILE AS RAW DATA

LIVE OPTIONS

- VIEW LIVE DATA ON GAUGES
- VIEW LIVE DATA AS A PLOT
- VIEW LIVE DATA AS RAW DATA

SETTINGS

- COMMUNICATION SETTINGS
- EXIT

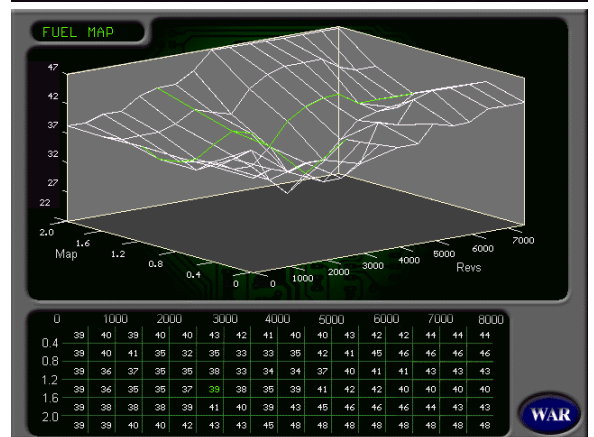
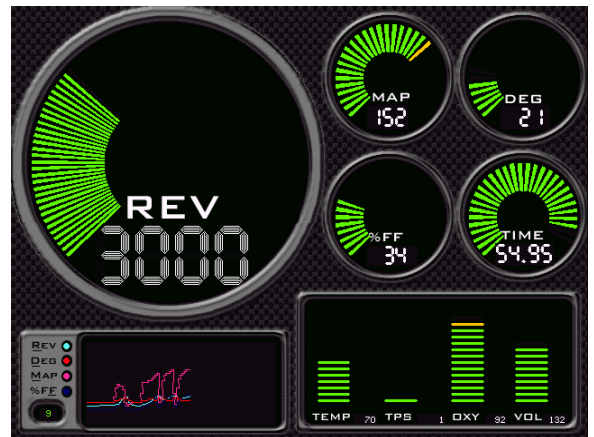
WAR Motorsport

www.warmotorsport.com
email: link@wave.co.nz
fax: +64 7 853 8500

© 2000 COPYRIGHT ALL RIGHTS RESERVED

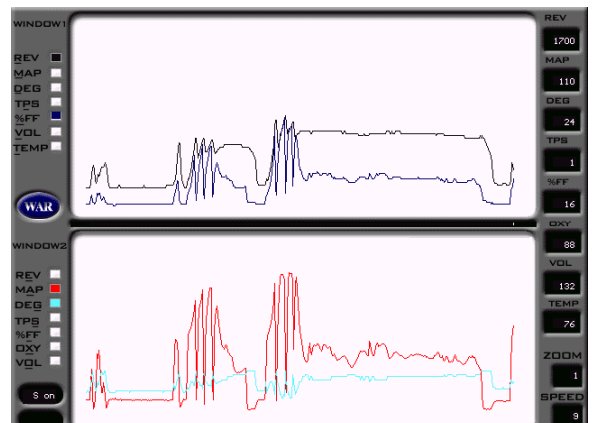
Features

- Simple and easy to use, operators can create tables and graphs with the turn of a key.
- The ability to view 3D Maps, of both fuel and ignition tables from a multiple of angles.
- Offline editing of all tables and graphs. (Adjustment has been locked out so your maps are safe from accidental modification)
- Real-time data streaming and plotting.
- Virtual Dash including RPM, Temp, Throttle position, Injector output, O2 sensor output...plus much more.
- Playback Data stream plots to view laps or drag races (datatrap only).
- Adjustable communication settings to suit virtually all Link management systems.
- Plus much much more...



For a limited time WAR Motorsport will be offering free MAP diagnostics in conjunction with this software. Simply E-mail your downloaded MAP file to WAR Motorsport by following the accompanying instructions and WAR Motorsport will access and advise where possible at no charge.

All purchasers will receive constant WAR Diagnostic software updates at no charge for the life of the product. Many future developments are planned. Full installation and operating instructions are supplied with the software.



Link ElectroSystems Ltd.

Ph +64 3 3488854 Fx +64 3 3436195